



Applications Note 905 Real Time Reports

Question: My boss wants A Real Time Production Report on his PC. Is there an easy way to do this?

Answer: The easy way is to use a **CorsairHMI Remote**. If you are running CorsairHMI nodes in your plant, you can easily link to the main HMI and extract its data over the **Office IP** network. You can do this without disturbing your plant network, or opening the possibility of someone on the office network sending erroneous information to one of your plant processes.

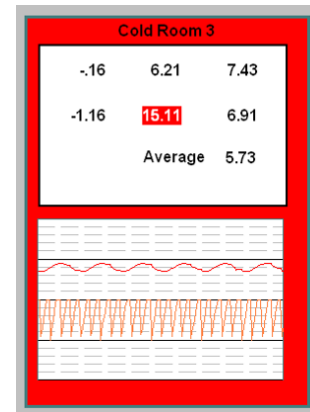
Unlike plant information where real time means right this second (or faster), bosses generally define real time as the last few minutes. Even though you can make the remote system as fast as the plant system, the IT department will soon be on your doorstep wondering where all of their bandwidth has gone. So we make the CorsairHMI Remote update only every few seconds. It also only asks for the data it needs from the main plant HMI system. If you are doing totalizations, or shift reports, it is only necessary to download the totalized information to show "Real Time" results. We let the plant HMI network continue to run in its Pseudo-Deterministic mode, while we supply the office data only when it is required.

Shift Loading Report			
Time	Truck #	Carrier	Load
Shift Total		14	70951.8
Mon May 04 14:31:08 2009	12378	R & J Commerci	5069.7
Mon May 04 14:31:57 2009	9854Z	Southside Haul	5051.8
Mon May 04 14:32:46 2009	12378	Liquid Serv	5084.9
Mon May 04 14:33:35 2009	9854Z	Liquid Serv	5080.0
Mon May 04 14:34:24 2009	12378	Southside Haul	5020.5
Mon May 04 14:35:13 2009	9854Z	Southside Haul	5100.5
Mon May 04 14:36:02 2009	RJ121	R & J Commerci	5067.1
Mon May 04 14:36:51 2009	9854Z	Southside Haul	5039.0
Mon May 04 14:37:40 2009	12378	R & J Commerci	5082.2
Mon May 04 14:38:29 2009	9854Z	Liquid Serv	5076.7
Mon May 04 14:39:18 2009	9854Z	R & J Commerci	5063.9
Mon May 04 14:40:07 2009	T6792W	Tony's Tank	5068.2
Mon May 04 14:40:56 2009	9854Z	R & J Commerci	5074.1
Mon May 04 14:41:45 2009	T6792W	R & J Commerci	5063.2

The boss may also want to see charts and graphs, or real time alarms. CorsairHMI's ability to switch screens and build Real Time graphs are built into the remotes. If your boss wants his own report, simply go into CorsairHMI's rich screen generator and build the report he needs. Calculations, alarms, logic can be done in the main plant HMI, or directly in the CorsairHMI remote. You can build anything in the CorsairHMI remote that you can build in the main CorsairHMI system.

What about instant data? Sometimes you see something that looks amiss and you want a real time graph of it. With Corsair's Quick Trends you can just move the cursor over the data, and press Cntl-Q for a quick trend.

The boss can have his own data logs, alarms, and screens that are just what he needs to monitor the information he needs,



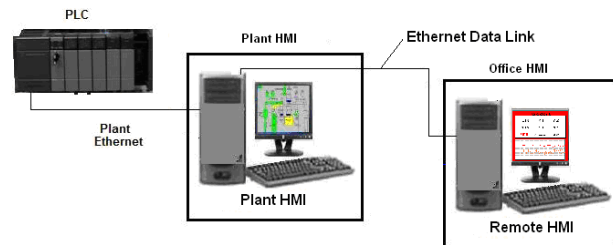
It is also possible to quickly and easily switch from one process to another. Just add a button and he can move from the refrigeration plant to the truck loading platform. You can even build local data logs and reports.

Why not just put it on the internet? CorsairHMI remotes can provide data for internet browsers, but CorsairHMI is interactive. Buttons, graphs, screens are all real time, without the security risk of hooking your plant network to the internet. CorsairHMI remotes are protected with security at both ends.

CorsairHMI Remotes also have all of the capabilities of other CorsairHMI systems. CorsairHMI remotes have security features, local calculations and alarms, Quick trends, local data logs and local reporting. You can copy and paste reports to Excel or other programs. CorsairHMI remotes are full blown HMI's designed to be operated on an office network.

How do you do it and how much does it cost?

Any HMI capable of serving out Modbus data can be used with a CorsairHMI Remote. Of course, we recommend our CorsairHMI Plant Master with DataBridge, but any HMI with Modbus IP remote capability will work. If you are using CorsairHMI you can even import CorsairHMI screens into your remote.



To use the remote you need a list of tag data that you want to link to, its address and data type. You simply fill out the interactive tag descriptor and you are running. Add a few links to the screens and your remote system is getting secure data from your plant HMI and displaying it on your screen.

How much does it cost? CorsairHMI remotes were actually designed to work with CorsairHMI plant HMI systems using Corsair DataBridge. However the Corsair Remotes are so flexible that they work with many other HMI's. It is only necessary that they serve out Modbus data. CorsairHMI remotes are priced at only \$ 175. (CSW-001R).

Technically the CorsairHMI Remote does not include a development system. The compatibility of the CorsairHMI system lets you download a demo copy from the web, develop your programming and save it in the subdirectory where your CorsairHMI Remote is located. Close the downloaded CorsairHMI product, open the remote and you'll be monitoring data. You can even use the demo programs on the web to help you get started.

If you later wish to upgrade, all of your code will be reusable. Code compatibility on CorsairHMI is 100% from the bottom to the top of our product line. (You may need some help if you want to change addresses or activate additional features.)

If you want to try-out CorsairHMI you can learn about its capability on our web site at www.AdvIndSys.com/CorsairHMI.htm . You can download a sample copy at <ftp://ftp.AdvIndSys.com>. There are also several applications specific demos available on the download site.

Additional Applications Notes and Tables are available at www.AdvIndSys.com/ApplicationsNotes.htm



PO Box 470 Harrods Creek, KY 40027
502-292-0213 800-532-2477 502-228-0127 – Fax
Sales@AdvIndSys.com www.AdvIndSys.com