

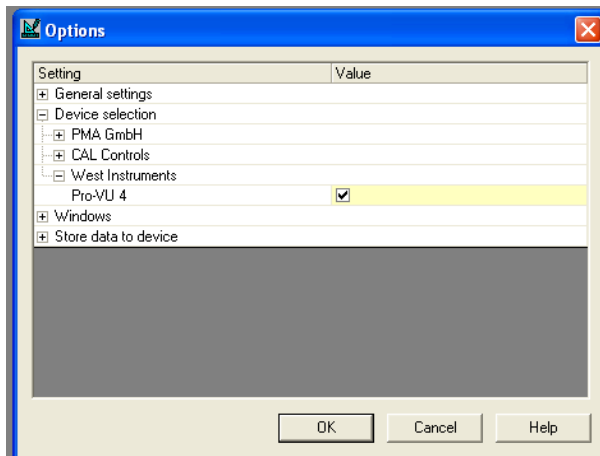
## How to create, save, and transfer a profile using Blue Control Software and ProVU4 Controller.

### Section 1: Creating and configuring a ProVU4 using Blue Control

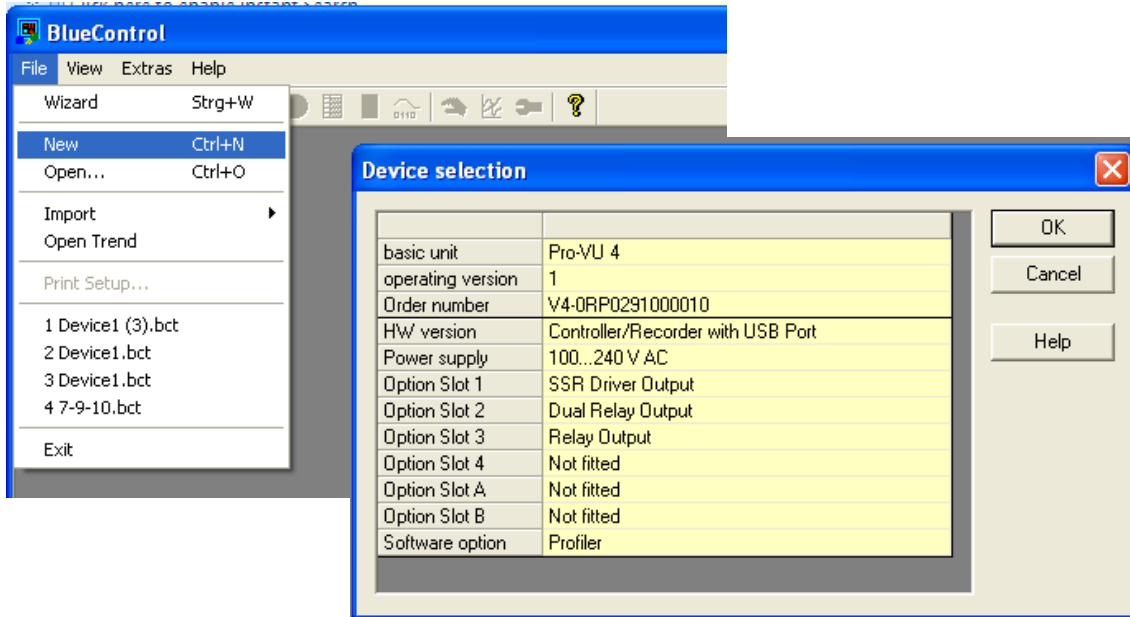
1. First open up Blue Control and select **Cancel**. Click **Extras**, then **Options**.



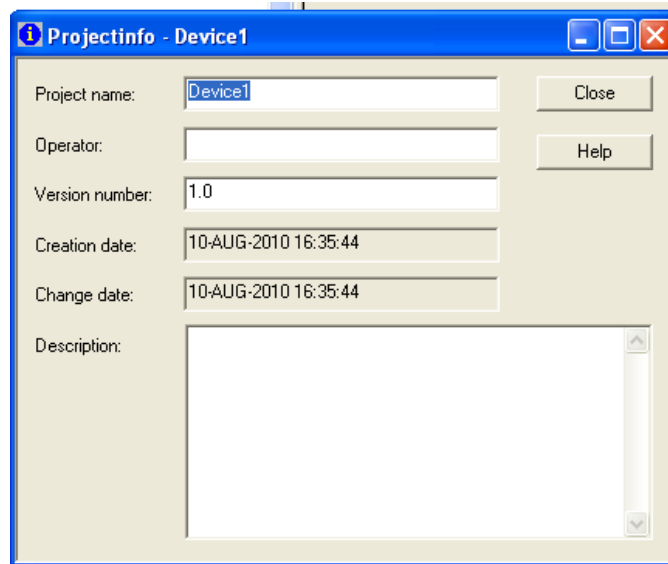
2. In the Options menu make sure that the ProVU box is checked under **Device selection** – **West Instruments** – **Pro-VU4**.



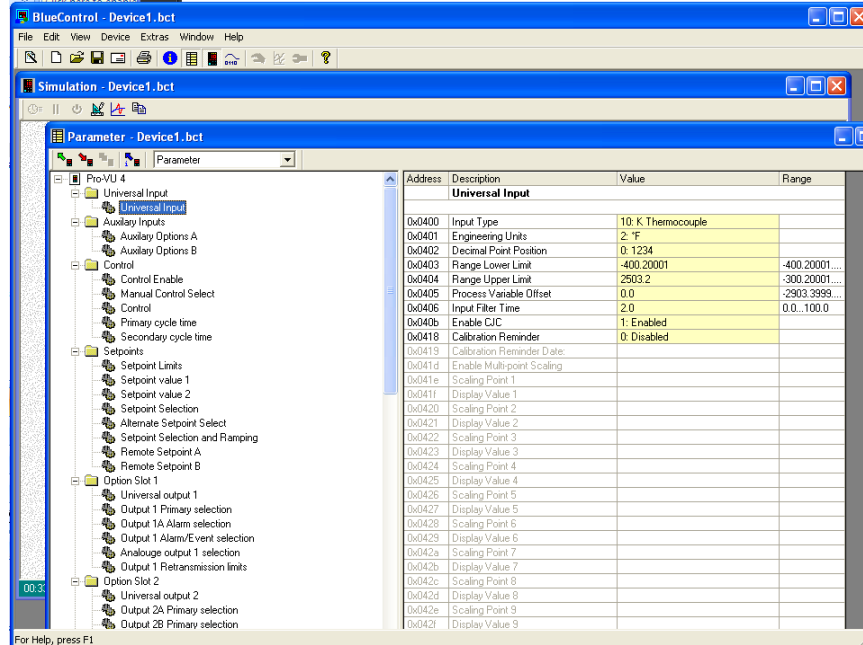
3. Click **File**, then **New**. In this screen, select the ProVU4, hardware version, and all the option slots that are installed on the ProVU4 that is going to be using the profile. (For this instructional document, a ProVU4 with Controller/Recorder + USB Port has been selected. The controller has SSR, Dual Relay, and a single relay on the option slots. It also has profiler software.) When finished, click **OK**.



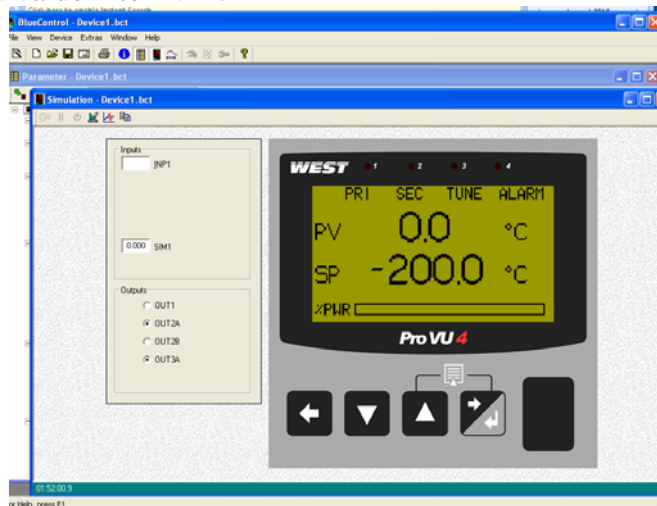
4. In the Projectinfo tab, create a project name (name chosen was Device1) and click **OK**.



- There should be two windows open in Blue Control. The first window is Parameter. In the Parameter window, all the settings and configurations for the ProVU device can be selected. Setting such as Inputs, Outputs, Alarms, Setpoints. Virtually everything that can be set using the ProVU controller can be set in Blue control. Set all the parameters for the controller using this window.

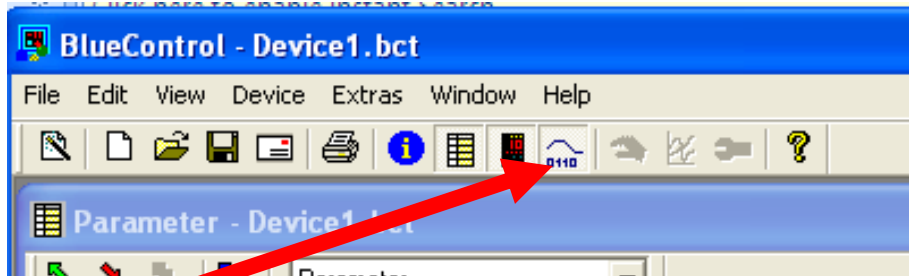


- The other window is the Simulation window. Simulation can be used to preview how the ProVU4 will work out in the field before using it for the first time. With the Simulation window selected, the arrows on the ProVU4 can be controlled from clicking on the arrows or using the arrow keys on a keyboard. To simulate an input, type the desired value into INP1.




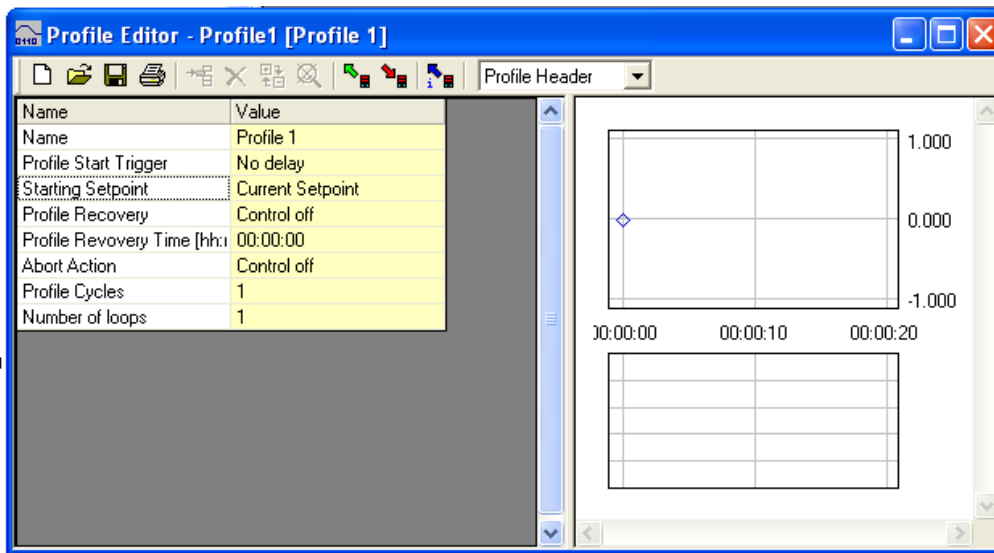
## Section 2: Creating a Profile for the ProVU4

1. With the Blue Control software open and the ProVU4 selected and configured. Click on the **Program Editor** Icon located in the top navigation bar.

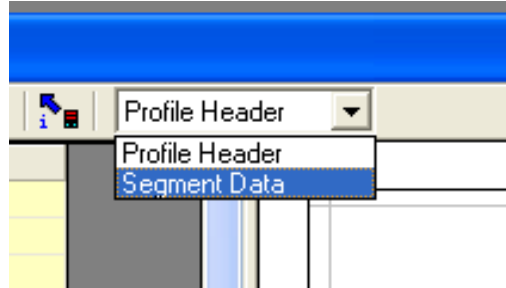


Program Editor  
Button

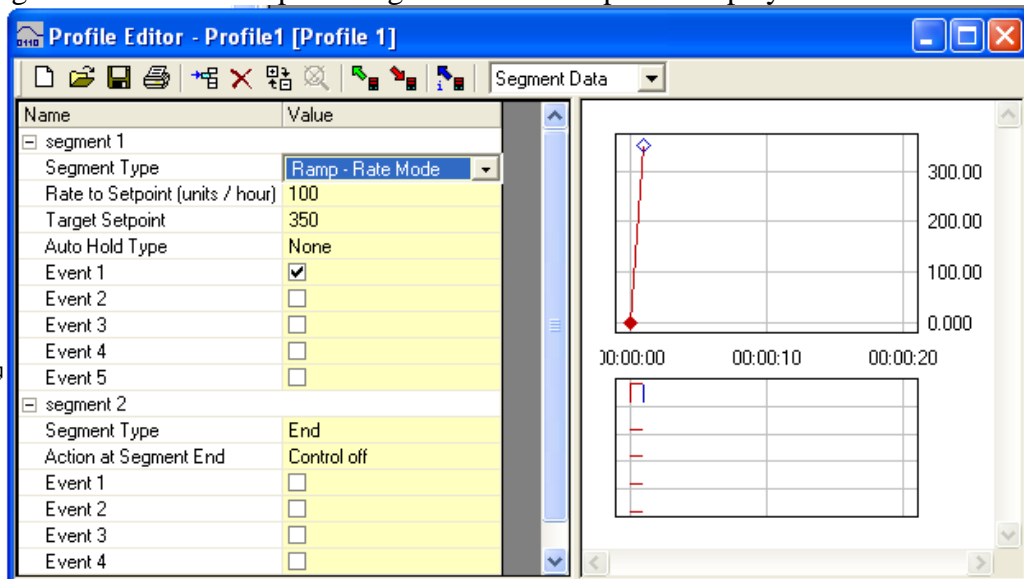
2. In the Profile Editor window, click on the New Profile icon (  ). The Profile Editor will show initial setup of the first profile. Choose the name, start trigger and starting setpoint of the controller.



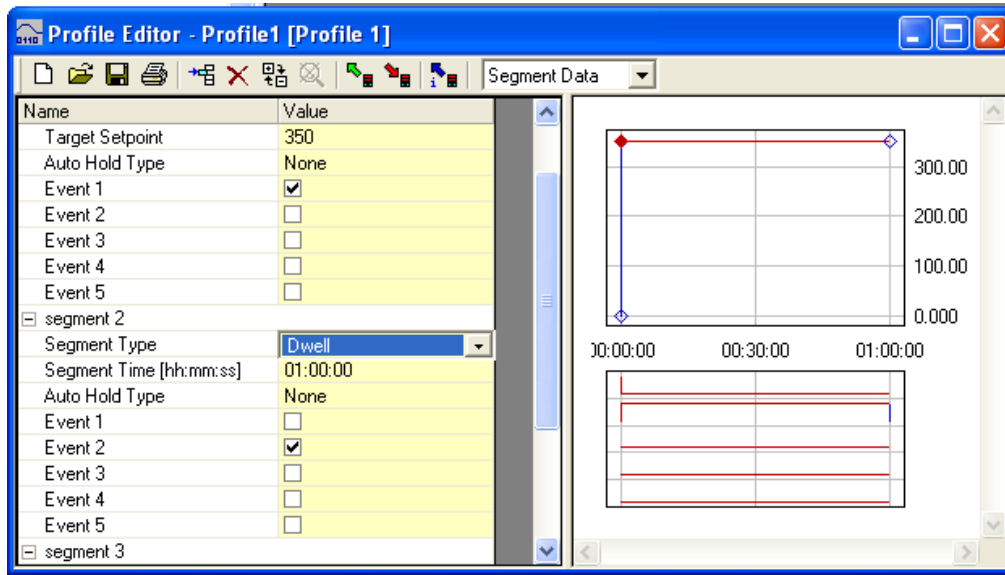
- Once all the initial settings are chosen, use the drop down menu to change Profile Header to Segment Data.



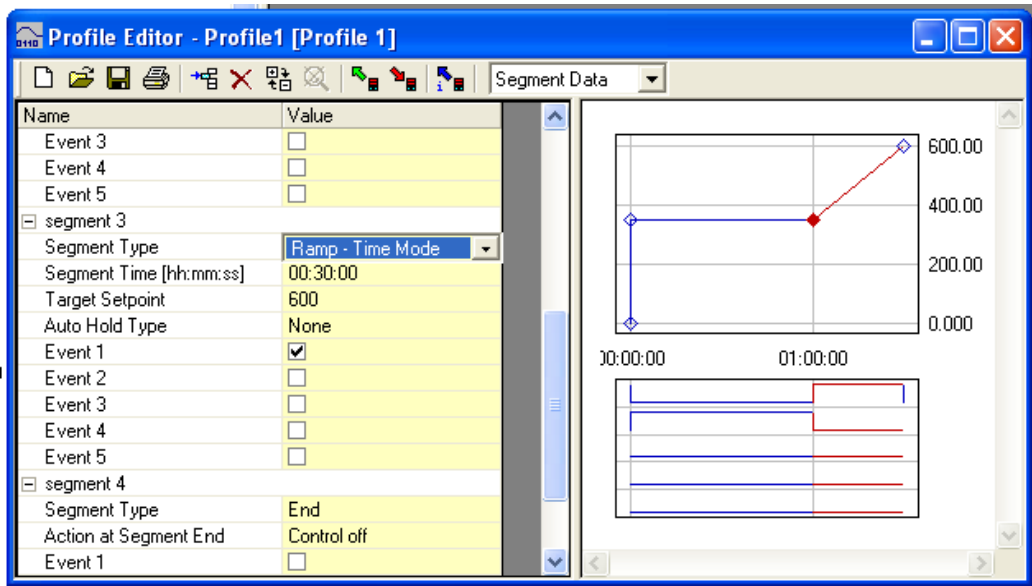
- From the Segment Data menu, each segment of a profile can be created. The first option is Segment Type. If anything besides **End, Join** or **Repeat sequence then End** is selected, the program will automatically create a new segment. (NOTE: All profiles must end with an **End** or **Join** type segment). This instructional document will step through how to make a simple profile with a Ramp-Dwell-Ramp-Dwell-End. The first segment will be a RampRate segment with the options displayed below.



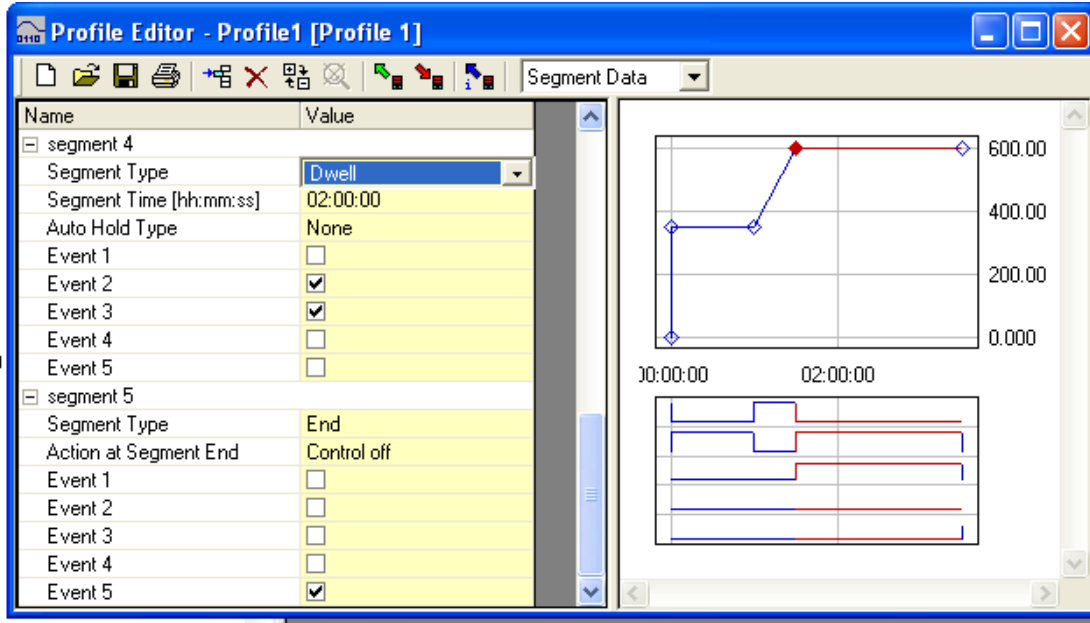
- The next step is to add a Dwell. To add a Dwell of 1 hour, input the values below. (NOTE: Events can be set from the Parameter window. Events can control certain outputs on ProVU4 controllers)



- To show the different types of Ramp options, the next segment will be a RampTime as seen below. Ramp Time with a 30 min time set to a 600 degree temp.



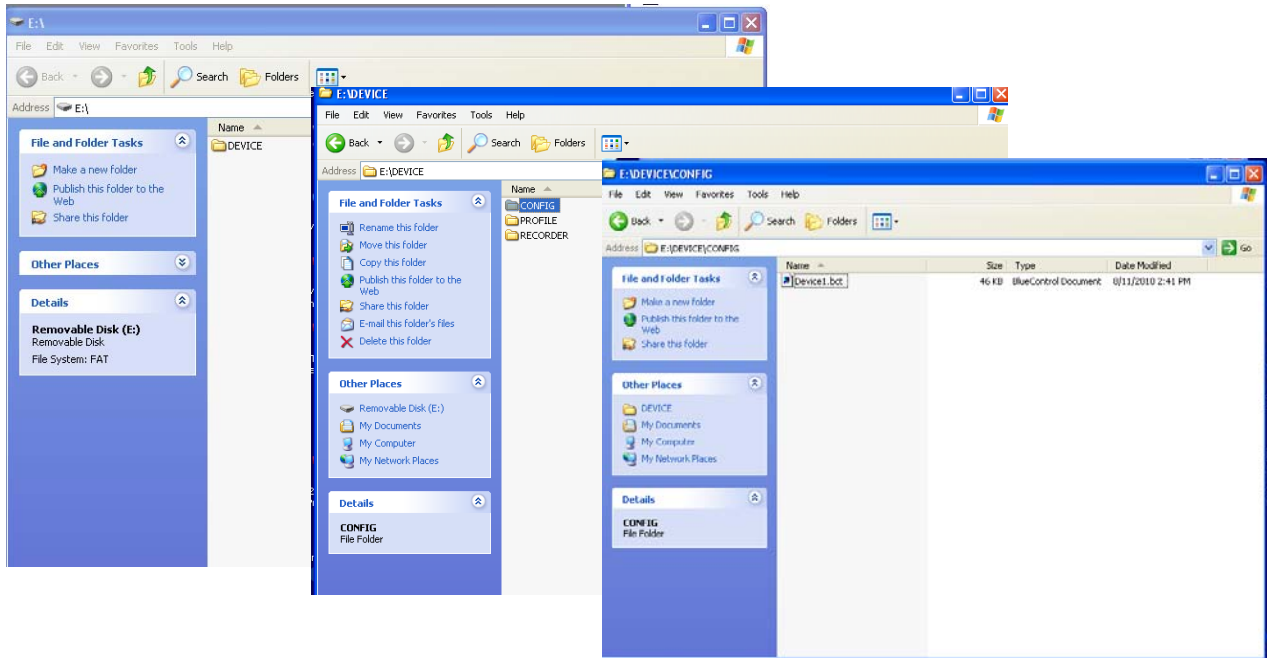
- The final Dwell will be at 600 degrees for 2 hours. Then segment 5 will be used for an End.



- NOTE: Be sure to save the Profile Editor and Parameters to an easily locatable position on the computer.

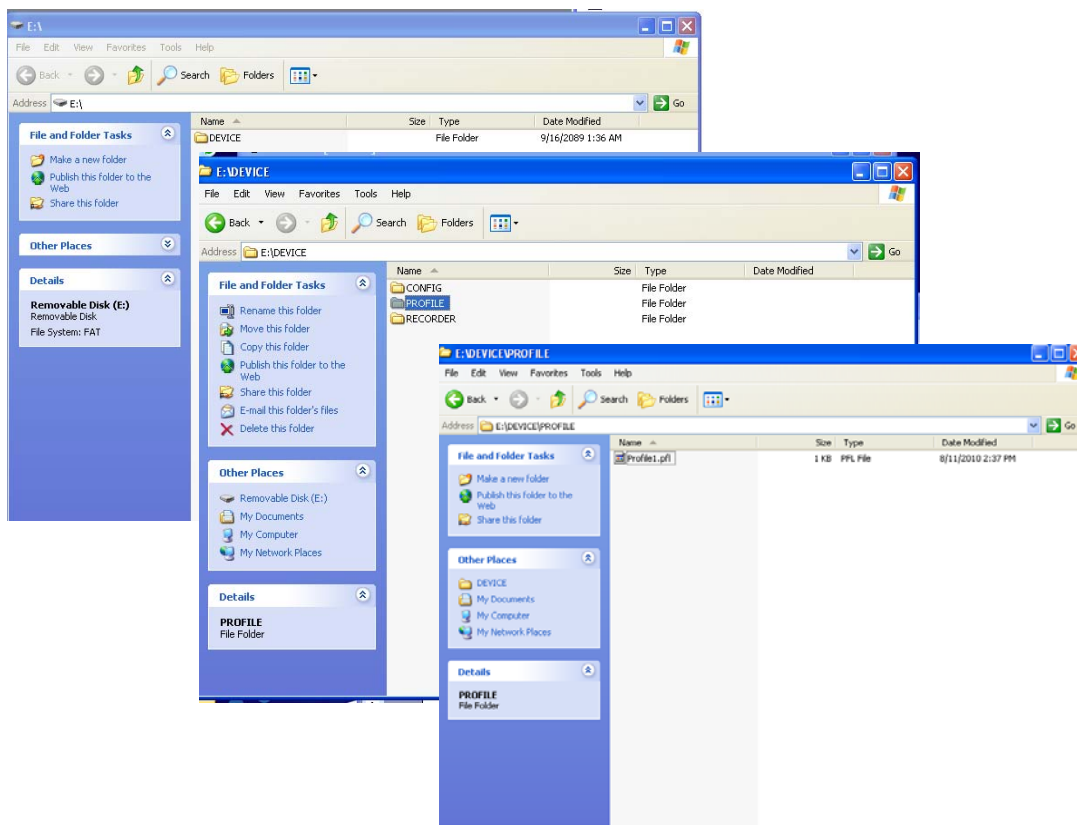
## Section 3: Transferring Configuration and Profile information from the computer to the ProVU4 controller

1. First plug the USB stick into the ProVU4 so that is initialized with the controller. (without this step, the proper folders in the USB stick will not be created). Remove the USB when the initialization is completed.
2. Plug the USB stick into the computer and open the USB folder. On the main folder there should be a folder named DEVICE. Open the folder DEVICE, and then open the folder named CONFIG. Inside the CONFIG folder, transfer the .bct file that was saved when the Parameters window was saved in Blue Control. The file has the same name as the name of the device.

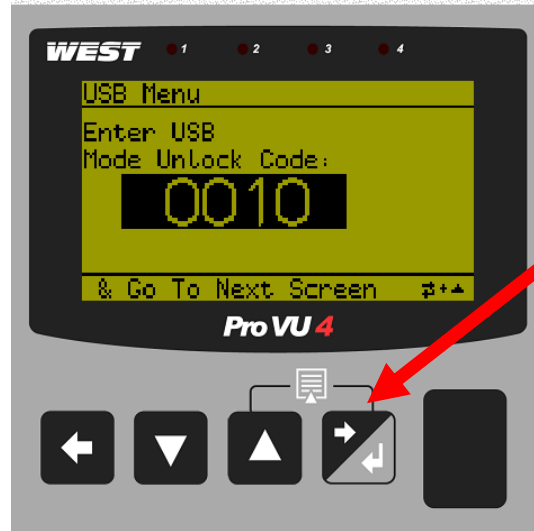




3. If a profile needs to be transferred to the ProVU4, open the PROFILE folder located in the DEVICE folder. Transfer the .pfl file that was saved when the Profile Editor was saved in Blue Control.

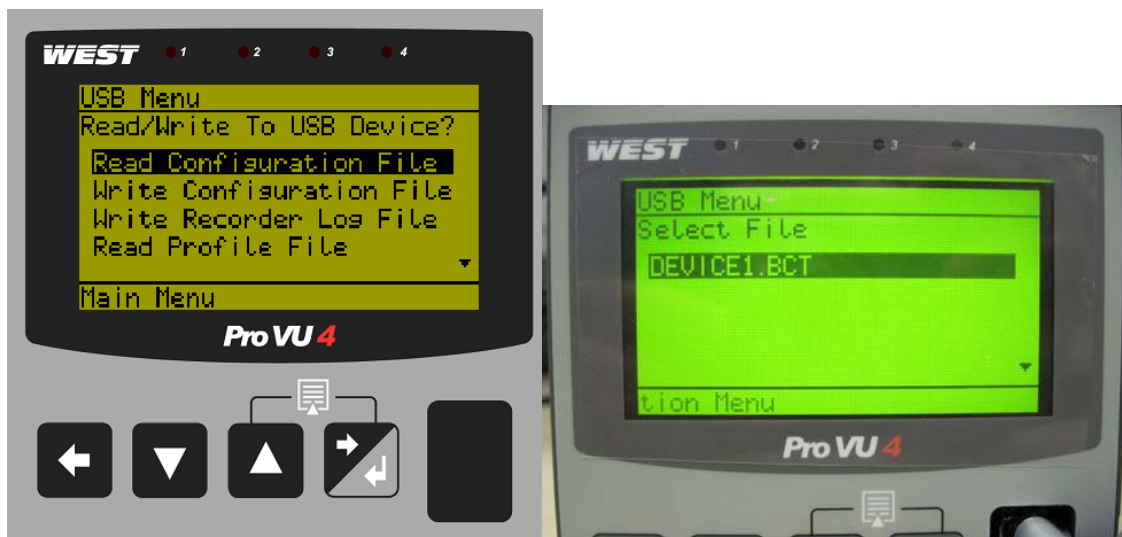


- Once the Configuration and Profile data files are loaded on the USB stick, plug the USB stick into the ProVU4. ProVU4 will run an initialization procedure for the memory stick. Once that is complete, the ProVU4 will require an unlock code. By default, the unlock code on all ProVU4s is 10. Select the correct unlock number and press the forward arrow.



**NOTE: The forward button is the far left button with two arrow symbols.**

- In the USB Menu, select **Read Configuration File**. Select the name of the file that was loaded onto the USB stick and confirm the read from USB. The configuration will now download to the ProVU4 (this may take up to 5 min).

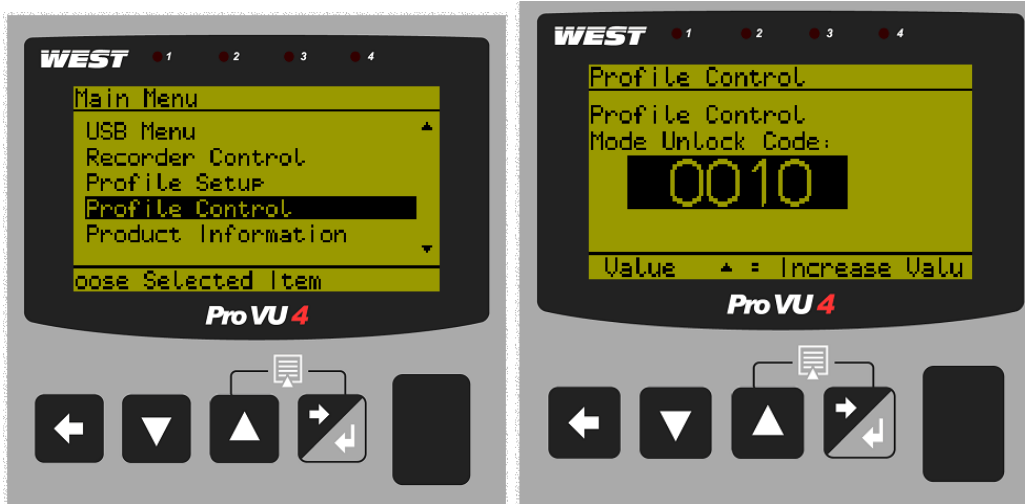


- To program a profile to the ProVU4. Go back into the USB menu and select **Read Profile File**. Select the name of the file that was loaded onto the USB stick and confirm the read from USB.

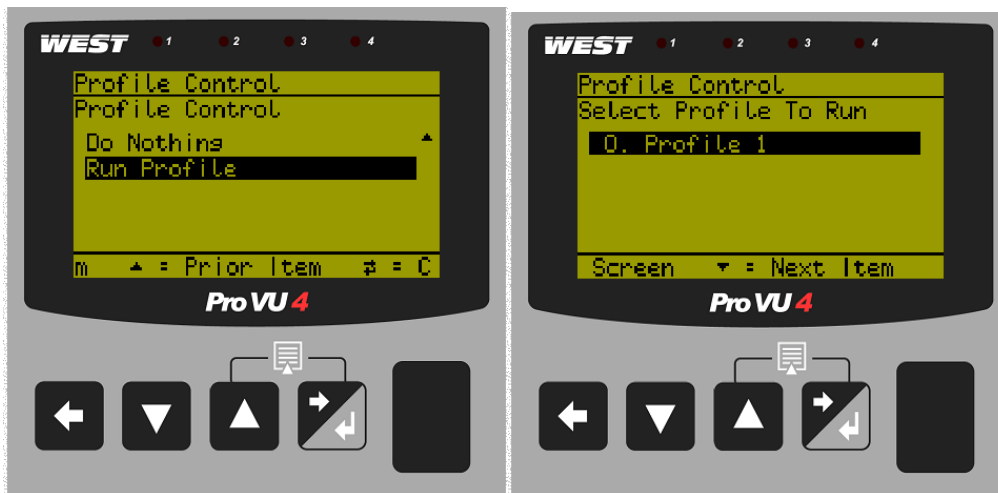


## Section 4: Selecting a profile to run in the ProVU4

1. From the main screen of the ProVU4, press both the **Up** and **Right** arrow to go into the main menu. From the main menu, select the **Profile Control** option. By default the unlock code for the Profile Control menu is ten. When the code is entered press the **Right** arrow.



2. In the Profile Control menu, select **Run Profile**. Then select the name of the profile that was loaded into the ProVu4.



3. There will be a confirmation for running any profile. Select **Yes**. The controller will now show that it is running a profile.

